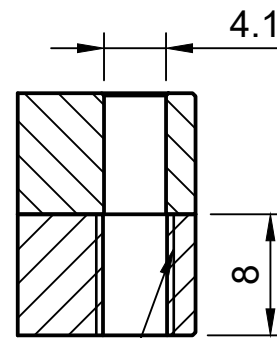


A-A (2:1)



- There is two options how to mount controller:
1. Screw controller down with M4 screw
 2. Screw M5 screw from bottom to the controller.
Maximum length of thread witch goes to the controller is 8mm.

*length is to bottom of the connector

MATERIAL:		NAME:	DATE:
WEIGHT: 570g	+0.2 +0.0	DRAWN: Matous Cmelik	09.05.2018
PROJECTION: [ISO E]	-0.1 -0.05	CHECKED: Matous Cmelik	05.09.2018
ACCURACY:			
TOLERANCE:			
	PART NAME: SC controller		Size: A4
	FILE NAME: SC_controller_assembly-rev_3		Scale: 1:1
		Rev: 3	List: 1/1